

Alfred Plate PROJECT PORTFOLIO



799 BROADWAY



Location	New York, USA
Finish(es)	Bone White, Sunstorm Moondust, Driftwood
Architect / Specifier	Perkins + Will
Installer / Contractor	Island Exterior Fabricators
Size	98,000 sqft

PIAZZA TERMINAL



Location	Pennsylvania, USA
Finish(es)	Custom Tile Corten
Architect / Specifier	BKV Group
Installer / Contractor	Architectural Metal Designs, Inc.
Size	80,000 sqft

GATEWAY CENTER



Location	New Jersey, USA
Finish(es)	Custom Black Corten
Architect / Specifier	Gensler
Installer / Contractor	Bamco, Inc.
Size	22,100 sqft

2 PENN PLAZA RENOVATION



Location	New York, USA
Finish(es)	Custom Black Anodized (BLKADZ), Classic White
Architect / Specifier	Charles Luckman Associates
Installer / Contractor	Bamco, Inc. / IDA Exterior Systems
Size	145,000 sqft

100 QUEENS QUAY



Location	Ontario, Canada
Finish(es)	Dusty Charcoal
Architect / Specifier	B+H Architects
Installer / Contractor	Riverside Group LTD
Size	63,500 sqft

THE ONE



Location	Ontario, Canada
Finish(es)	Crystal Silver
Architect / Specifier	Foster and Partners Core Architects
Installer / Contractor	Riverside Group LTD
Size	237,000 sqft

THE WORKS



Location	Georgia, USA
Finish(es)	Pacer White & Hearty Orange (Double-Sided)
Architect / Specifier	Smith Dalia Architects
Installer / Contractor	The Miller Clapperton Partnership, Inc. / Dakota Contrators, LLC
Size	16,800 sqft

T3 WEST MIDTOWN BUILDING



Location	Georgia, USA
Finish(es)	Custom Black
Architect / Specifier	Hartshorne Plunkard Architecture
Installer / Contractor	Peachtree Protective Covers
Size	35,300 sqft

KENNESAW STATE UNIVERSITY ACADEMIC LEARNING CENTER



Location	Georgia, USA
Finish(es)	Monument, Pure Silver / Dove Gray, Bone White
Architect / Specifier	HOK
Installer / Contractor	Altech (SECO Architectural Systems)
Size	5,150 sqft

WATERSTONE OF WESTCHESTER



Location	New York, USA
Finish(es)	Bone White
Architect / Specifier	National Development
Installer / Contractor	Fantin Supply
Size	2,350 sqft

UC DAVIS HEALTH PARKING



Location	California, USA
Finish(es)	Bone White (Double-Sided)
Architect / Specifier	Dreyfuss + Blackford
Installer / Contractor	Clark Pacific
Size	15,600 sqft

NEW VALLEY HOSPITAL



Location	New Jersey, USA
Finish(es)	Custom Silver Smith, Custom Regal White
Architect / Specifier	HDR
Installer / Contractor	EDA Contractors
Size	36,000 sqft

5 RIVER PARK COBBLE HILL

400 SUMMER



Location	New York, USA
Finish(es)	Sunstorm Fawn Mica
Architect / Specifier	Romnes Architecture PLLC
Installer / Contractor	Island Exterior
Size	41,500 sqft



Location	Massachusetts, USA
Finish(es)	Sunstorm Graphite Gray
Architect / Specifier	Morris Adjmi Architects
Installer / Contractor	Island Exterior
Size	44,000 sqft

UPMC MERCY VISION AND REHABILITATION HOSPITAL



Location	Pennsylvania, USA
Finish(es)	Custom Silversmith
Architect / Specifier	HOK
Installer / Contractor	East Coast Metal Systems
Size	69,000 sqft

WALMART HQ



Location	Arkansas, USA
Finish(es)	Silver Shadow, Custom Pewter
Architect / Specifier	Gensler
Installer / Contractor	Island Exterior
Size	159,000 sqft

NORTHEASTERN UNIVERSITY



Location	Massachusetts, USA
Finish(es)	Umbra Gray UC I30669
Architect / Specifier	Payette
Installer / Contractor	Suffolk Construction
Size	122,300 sqft

MERCEDES BENZ AUTOHAUS



Location	Queensland, Australia
Finish(es)	Black, White, Anthracite, Silver Metallic
Architect / Specifier	Cottee Parker
Installer / Contractor	A-Clad
Size	86,200 sqft

BMW SHOWROOM



Location	Victoria, Australia
Finish(es)	Pure Silver
Architect / Specifier	-
Installer / Contractor	Cladding Systems
Size	22,500 sqft

CALVARY ADELAIDE HOSPITAL



Location	South Australia, Australia
Finish(es)	Charcoal, White
Architect / Specifier	Silver Thomas Hanley (STH)
Installer / Contractor	Asurco
Size	22,400 sqft

CASEY HOSPITAL



Location	Victoria, Australia
Finish(es)	Pure Silver
Architect / Specifier	Silver Thomas Hanley (STH)
Installer / Contractor	Asurco
Size	54,000 sqft

MANTRA EPPING HOTEL



Location	Victoria, Australia
Finish(es)	Black
Architect / Specifier	-
Installer / Contractor	-
Size	6,500 sqft

ICCONS DANDENONG SOUTH



Location	Victoria, Australia
Finish(es)	Monument, Red
Architect / Specifier	RPC Architects
Installer / Contractor	Alclad Architectural
Size	-

SWINBURNE UNIVERSITY OF TECHNOLOGY



Location	Victoria, Australia
Finish(es)	Red
Architect / Specifier	Design Worldwide Partnership
Installer / Contractor	A Class Cladding
Size	-

MELBOURNE GIRL’S COLLEGE



Location	Victoria, Australia
Finish(es)	Pure Silver
Architect / Specifier	-
Installer / Contractor	Askin
Size	-

NORTH AMERICAN PROJECT REFERENCES

Alfrex FR Metal Composite Material

PROJECT NAME	LOCATION	ARCHITECT
Waterstone at White Plain IndependentW Living Facility	New York	Elkus Manfredi Architects
WEXFORD DREXEL ACADEMIC TOWER	Pennsylvania	Ballinger
799 Broadway	New York	Perkins + Will
80I Church	Tennessee	Goettsch Partners
Piazza Terminal	Pennsylvania	BKV Group
100 Queen's Quay	Ontario	B+H Architects
5 River Park Cobble Hill	New York	ROMINES ARCHITECTURE PLLC
540 Fulton Street	New York	Marvel Architects
55 Mercer	Ontario	IBI Group
Concord Galleria	British Columbia	GBL Architects, IBI Group
Darthmouth Hitchcock Medical Center (DHMC)	New Hampshire	HDR
Herbert Hoover HS	West Virginia	Williamson Shriver Architects Inc
MSG Sphere	Nevada	Populous
One Time Square	New York	SLCE Architects, LLP
The New Valley Hospital	New Jersey	HDR
The One	Ontario	Foster and Partners Core Architects
The Works	Georgia	Smith Dalia Architects
UPMC Mercy Vision and Rehabilitation Hospital	Pennsylvania	HOK
Walmart Headquarters	Arkansas	Gensler
Kennesaw State University Academic Learning Center	Georgia	HOK
Northeastern University EXP Research Center	Massachusetts	Payette
The Dorian Hotel	Alberta	Gibbs Gage Architects
Aequitas Community Justice Campus	Indiana	CSO Architects, Inc.
ALFIE Dentistry	Ontario	Vanessa Fong Architect
Brock University	Ontario	TBA
Desa Glass	Alberta	TBA
Guillevin International	Alberta	TBA

ALFREX PLATE HARNESSES CONTRASTS IN COLOR, SHAPE, AND LIGHTON THE WORKS PROJECT



Project Name	The Works Parking Garage
Location	Atlanta, Georgia USA
Developer	Selig Developments, a subsidiary of Selig Enterprises, Inc.
Architect	Smith Dalia Architects - Atlanta, GA
General Contractor	Dakota Contractors, LLC
Fabricator	MillerClapperton Inc.
Installer	MillerClapperton Inc.
Alfred Product	Alfred Plate - 3mm Pre-finished Solid Aluminum Plate
Product Finish	(Double Sided Finish) PVDF Custom White over PVDF Custom Orange

Anchoring this transformation is The Works, an expansive 80-acre mixed use development blending office space, residential living, retail, and dining - while preserving the district's historical industrial character. Guided by the vision of Selig Developments and designed by Smith Dalia Architects, the completion of Phase One showcases a parking garage remarkable for its unique design and complexity. Canvassing the garage is 13,025 square feet of 3mm thick Alfred Pre-Finished Solid Aluminum Plate from Alfred, LLC of Buford, Georgia USA. Fabricated and installed by MillerClapperton Inc. of Austell, Georgia, the façade is intricately designed to harness contrasts in color, shape, depth, and light to create stunning views both day and night.

The Challenge
MillerClapperton recognized early on that this complex project would require custom solutions on all facets of execution from product choice, engineering, fabrication, and installation. Façade panel design called for a product that could be perforated in large areas, folded into geometrical shapes, coated orange and white on opposite sides, and capable of sustaining structural loads. This semi-transparent façade assembly then had to be attached to existing blue colored vertical steel beams in a manner that did not interfere with the architect's design vision. A significant research effort was undertaken to develop a simplified sub-structure for wall panel installation that would create an interplay between the exterior façade without distracting from the design in an array of lighting conditions.

Product Choice – Alfred Plate
Alfred Pre-Finished Solid Aluminum Plate in a 1/8” thickness was chosen due to its ability to meet the diverse aesthetical, structural, and economical requirements. Alfred Plate is coil coated on a high-speed paint line designed specifically for heavier gauge metals. As such, it was very efficient to manufacture sheets double coated with a custom white paired opposite a custom orange. This enabled sheets to be custom fabricated, folded, and oriented to create color contrasts using the same panel without welding or additional field painting. Further savings were realized through scrap reduction as Alfred Plate sheets were manufactured in a custom width and provided in numerous custom lengths via its integrated coil coating, tension leveling, and cut-to-length process.

PROJECT NAME	LOCATION	ARCHITECT
MNP Tower	Alberta	Kohn Pedersen Fox
Nancy Greene Way Residence	British Columbia	M Plus Architecture
Red Stone Strip Mall	Alberta	TBA
Sidaway	British Columbia	TBA
Steel Craft Expansion	Alberta	Hodgson Schilf Evans Architects Inc.
TD Chinook	Alberta	TBA
The Intersection - Adidas Village	Oregon	Hacker Architects
Vanderbilt Grad Housing	Tennessee	Valerio Dewalt Train
Vegreville	Alberta	TBA

GLOBAL PROJECTS

LOCATION	PROJECT NAME	SIZE (SQFT)	ARCHITECTURAL FIRM
Victoria, Australia	Melbourne International Airport T2	150,694	N/A - Retrofit Application
Queensland, Australia	333 Ann Street	89,964	N/A - Retrofit Application
Queensland, Australia	Mercedes-Benz Autohaus	86,111	Cottee Parker
Victoria, Australia	Deakin Uni	75,347	N/A - Retrofit Application
Victoria, Australia	Plummer Street Apartments	67,392	Elenberg Fraser
Victoria, Australia	Casey Hospital	53,819	N/A - Retrofit Application
Victoria, Australia	Upwey High School	49,600	N/A - Retrofit Application
Victoria, Australia	Midtown	30,677	Fender Katsalidis
Queensland, Australia	119 Charlotte Street	29,471	N/A - Retrofit Application
Victoria, Australia	Shepparton Hospital	26,995	N/A - Retrofit Application
Victoria Australia	Crowne Plaza Hotel	24,046	BPSM Architects
Victoria, Australia	BMW Showroom	22,475	N/A - Retrofit Application
South Australia, Australia	Calvary Hospital	22,356	Silver Thomas Hanley
Victoria, Australia	Vibe Hotel	12,916	Caydon

CASE STUDY

Sheet Fabrication and Engineering

For the large number of perforated panels, custom tooling was developed to punch press perforated sheets of Alfrex Plate with 1.5” diameter openings. Sheets were then cut to size and back routed to enable folding into 3-dimensional geometrical shapes. As a prefinished product, Alfrex Plate was able to be cut, routed, and formed much like MCM panels without additional steps or danger of paint finish crazing. For panel installation though, a wall façade with large perforated areas and openings presented both an engineering and aesthetical challenge requiring a unique solution.

To achieve this dual requirement, custom 1.5” Z-Girts were fabricated from Alfrex 3mm Plate and attached horizontally to the garage’s vertical beams. This provided not only a structurally sound means for installation, but also an aesthetical solution by capitalizing on the double side coated Alfrex Plate sheets to integrate seamlessly into the façade’s color and design scheme.

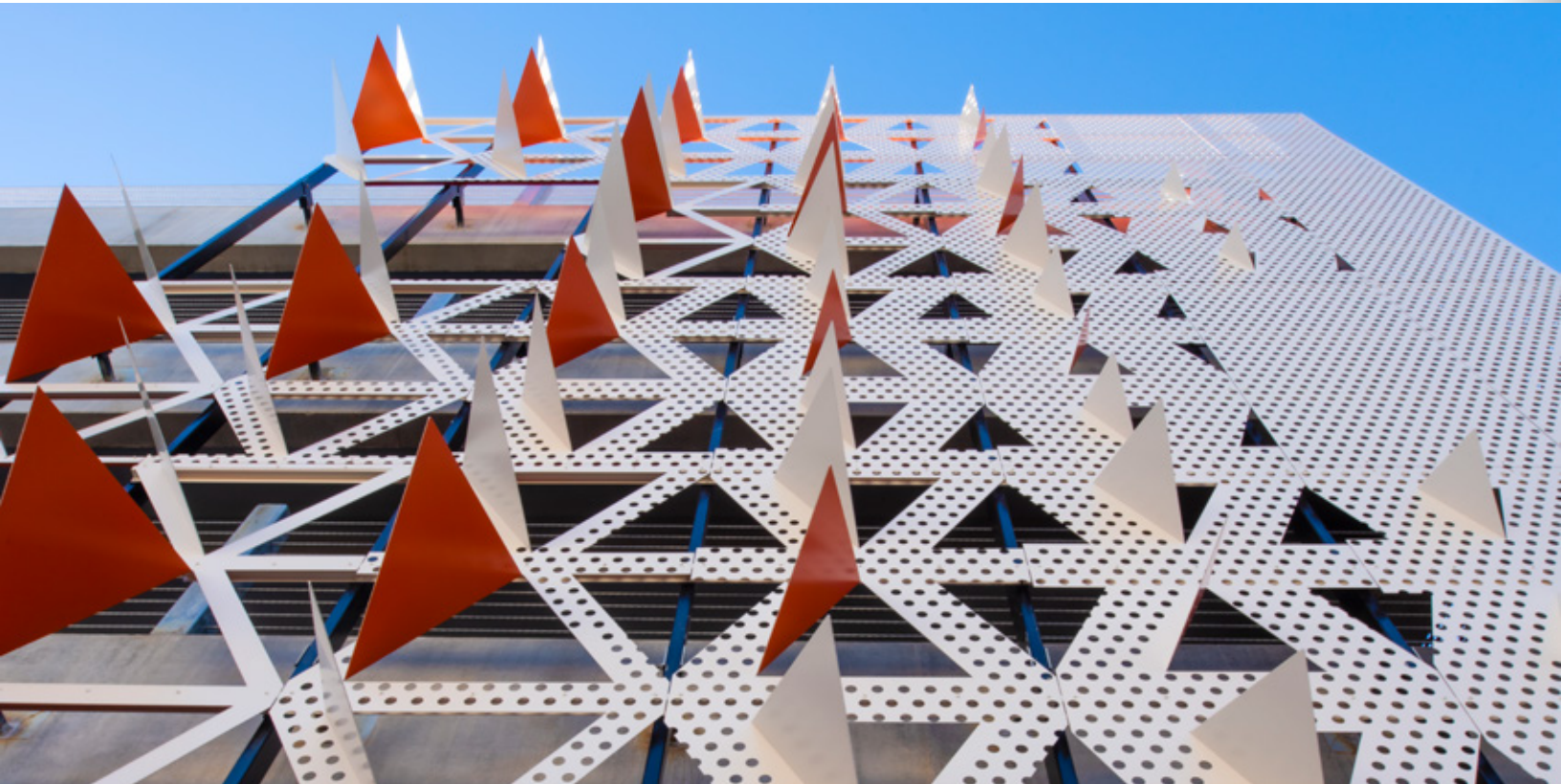
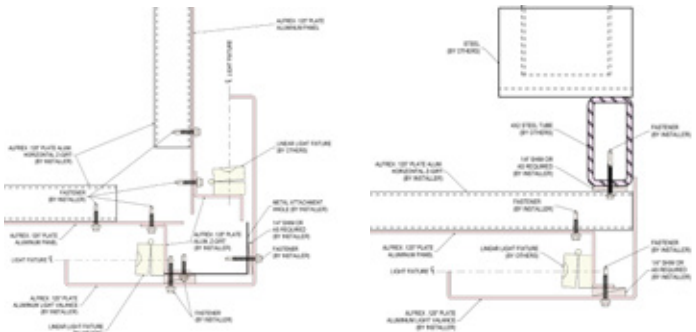
Custom Light Valences

Considerable effort was put into the design and integration of custom light valences manufactured from Alfrex Plate. The light valences are effortlessly integrated into the façade design and accentuate nighttime views of the building.

The Result

The Parking Garage at The Works stands out as an interconnected part of a broad development project thanks to its unique design and choice of materials. “I’m thrilled with the outcome of the project – the rigorous design process with the client, design team, and fabrication team paid dividends in the cohesive manner that everything that came together”, said Nicole Seekely, the Project Architect. “The color of the panels provides an added level of artistic expression to the façade, particularly on a sunny day when the light casts shadows on the panels.” The flexibility of pre-finished Alfrex solid aluminum plate enabled fabrication and installation much like MCM metal composite material, cutting down on waste, fabrication time, and an efficient means of color coating.

Alfrex specializes in fire-resistant and non-combustible architectural metal wall cladding with a portfolio including Alfrex Pre-Finished Solid Aluminum Plate, Alfrex FR Metal Composite Material, and Matching 0.040” flat sheet. Its parent company, Unience, Co Ltd., began operation in 2000 as a manufacturer of specialty fire-resistant coatings, bonding materials, and pelletized mineral filled FR core compound for globally recognized MCM manufacturers. In 2008, Unience launched Alfrex in South Korea with a multi-line MCM production facility dedicated to the exclusive production of FR core MCM utilizing in-house, fire-resistant core technology. Today, both Unience and Alfrex are headquartered in Buford, Georgia USA, with a new state of the art FR core MCM production plant complimented by a commercial branch in Toronto, Ontario Canada.



Alfrex, Inc.
943 Gainesville Hwy Bldg. 100, Suite 4000
Buford, GA, 30518
470.589.7449
alfrex@alfrexusa.com
www.alfrexusa.com

alfrex
Fire Resistant & Non-Combustible Cladding