

Alfred FR

Metal Composite Material

PROJECT PORTFOLIO



GATEWAY MEADOWVALE



Location	Ontario, Canada
Finish(es)	Bone White
Architect / Specifier	Quadrangle Architects
Installer / Contractor	Carttera Private Equities
Size	16,041 sqft

HUTCHINSON METRO CENTER

(TOWER II AND ATRIUM)



Location	New York, USA
Finish(es)	Bone White
Architect / Specifier	Newman Design
Installer / Contractor	McGowan
Size	140,485 sqft

SHOTWELL STADIUM



Location	Texas, USA
Finish(es)	Anodic Clear Mica
Architect / Specifier	Huckabee & Associates
Installer / Contractor	AIS Architectural Image Systems, LLC
Size	11,000 sqft

NORTH HILLS CREATIVE OFFICE



Location	North Carolina, USA
Finish(es)	Castle Gray, Graphite Metallic and Medium Bronze Mica
Architect / Specifier	CI Design, Inc.
Installer / Contractor	Advanced Exterior Systems
Size	50,000 sqft

RUTGERS UNIVERSITY

(ATHLETIC PERFORMANCE CENTER)



Location	New Jersey, USA
Finish(es)	Bone White
Architect / Specifier	Perkins Eastman
Installer / Contractor	Epic Management
Size	17,018 sqft

NORTH STATE BANK



Location	North Carolina, USA
Finish(es)	Exotic Silver Mica, Medium Bronze Mica
Architect / Specifier	New City Design
Installer / Contractor	Advanced Exterior Systems
Size	-

OVERLAND ONE B3



Location	Kansas, USA
Finish(es)	Pewter Mica
Architect / Specifier	Burns & McDonnell
Fabricator	Standard Sheet Metal
Size	16,000 sqft

PANERA BREAD



Location	Florida, USA
Finish(es)	Bronze
Architect / Specifier	-
Installer / Contractor	Sundance Architectural Products
Size	800 sqft

FENWICK TOWER / THE VUZE



Location	Nova Scotia, Canada
Finish(es)	Black, Gray Silver
Architect / Specifier	Stantec Architecture
Installer / Contractor	Templeton Construction
Size	231,974 sqft

HAT @ WEST VILLAGE



Location	Alberta, Canada
Finish(es)	Custom
Architect / Specifier	NORR Architects
Installer / Contractor	Cidex Group
Size	140,485 sqft

RED DEER JUSTICE CENTRE



Location	Alberta, Canada
Finish(es)	West Pewter Mica II (custom) and JLR Gray Metallic
Architect / Specifier	Group 2
Installer / Contractor	Modern Cladding Finishes / Clark Builders
Size	56,000 sqft



Location	British Columbia, Canada
Finish(es)	Silver (custom)
Architect / Specifier	-
Installer / Contractor	Altium Building Corporation
Size	253.17 sqft

CASADONA PLACE



Location	Alberta, Canada
Finish(es)	Bone White
Architect / Specifier	Gibbs Gage
Installer / Contractor	EllisDon Design-Build
Size	59,077 sqft

SNC LAVALIN OFFICE



Location	Ontario, Canada
Finish(es)	Pure White, Ascot White
Architect / Specifier	De Silva Architect
Installer / Contractor	Arguson Projects, Inc.
Size	44,833 sqft

THE WINDSOR



Location	Alberta, Canada
Finish(es)	Black, Dark Gray, White
Architect / Specifier	NORR Architects
Installer / Contractor	Westpointe Building Services, Inc.
Size	59,077 sqft

HAT @ EAST VILLAGE



Location	Alberta, Canada
Finish(es)	Custom Wood, Bone White, Dark Gray, Dove Gray
Architect / Specifier	NORR Architects
Installer / Contractor	Cidex Group
Size	34,395 sqft

NCS MULTI-STAGE



Location	Alberta, Canada
Finish(es)	Cherry Wood, Pure White, Silver
Architect / Specifier	Genesis Building Corp.
Installer / Contractor	ARTE Group
Size	9,302 sqft



Location	Alberta, Canada
Finish(es)	Black
Architect / Specifier	-
Installer / Contractor	ARTE Group
Size	7,427 sqft

CANADIAN BLOOD SERVICES



Location	Alberta, Canada
Finish(es)	Dark Gray
Architect / Specifier	NORR Architects
Installer / Contractor	Bird Construction
Size	5,908 sqft

MNP TOWER



Location	Alberta, Canada
Finish(es)	Dove Gray, Black, Cherry Wood
Architect / Specifier	Kohn Pedersen Fox
Installer / Contractor	ARTE Group
Size	5,655 sqft

TEMPO AMENITY BUILDING



Location	British Columbia, Canada
Finish(es)	Gold
Architect / Specifier	Ciccozzi Architecture
Installer / Contractor	Cressey Development
Size	2,115 sqft

ALFIE DENTAL OFFICE



Location	Ontario, Canada
Finish(es)	Black, Pure White
Architect / Specifier	Vanessa Fong Architect
Installer / Contractor	Lincoln Stevens Construction & Design Ltd
Size	2,026 sqft

1400 BALTIMORE



Location	Missouri, USA
Finish(es)	Custom Gray White
Architect / Specifier	Burns & McDonnell
Installer / Contractor	Flynn Midwest LP
Size	123,377 sqft

AMAZON COUGAR FULFILLMENT CENTER



Location	Detroit, USA
Finish(es)	Amazon Prime Blue
Architect / Specifier	Stantec Architecture
Fabricator	Riverside Group (Fabricator)
Size	3,198 sqft

DAVENPORT



Location	Oklahoma, USA
Finish(es)	Bronze
Architect / Specifier	Lilly Architects
Installer / Contractor	Ventaire LLC
Size	16,878 sqft

PROVO CITY HALL



Location	Utah, USA
Finish(es)	Gray Metallic, Serpentine Metallic, Anodic Satin Metallic, Oyster, Beige
Architect / Specifier	VCBO Architecture
Installer / Contractor	LCG Facades
Size	82,084 sqft

THE SMYTH



Location	Connecticut, USA
Finish(es)	Dark Gray, Bronze
Architect / Specifier	Lessard Design
Installer / Contractor	Alufab / Katerra / EC Contracting
Size	97,200 sqft

COLORADO CONVENTION CENTER



Location	Colorado, USA
Finish(es)	Exotic Silver Mica and Classic White
Architect / Specifier	TVS Design
Installer / Contractor	EWS Texas / Bosco Constructors & Hensel Phelps
Size	51,000 sqft

1122 W CHICAGO



Location	Illinois, USA
Finish(es)	Ascot White, Black, Dark Gray, Classic White
Architect / Specifier	Pappageorge Haymes
Installer / Contractor	Edon / Pappageorge Haymes
Size	19,500 sqft

ADVANCED ORTHO AND SPINE



Location	Tennessee, USA
Finish(es)	Bright Silver Metallic
Architect / Specifier	Hayden Architecture & Interiors LLC
Installer / Contractor	Mathias Metal Systems, LLC / Fortis
Size	12,000 sqft

AEQUITAS COMMUNITY JUSTICE CAMPUS



Location	Indiana, USA
Finish(es)	Dark Walnut
Architect / Specifier	CSO Architects, Inc.
Installer / Contractor	Division 7 Mtls
Size	31,800 sqft

BOSTON SCIENTIFIC



Location	Minnesota, USA
Finish(es)	Exotic Silver Mica, Pewter Mica
Architect / Specifier	HGA
Installer / Contractor	Division V Sheet Metal
Size	66,000 sqft

DFW EXPANSION



Location	Texas, USA
Finish(es)	Pewter Mica
Architect / Specifier	Corgan
Installer / Contractor	CTA Panel Systems / EWS Texas
Size	25,000 sqft

FOUNDERS SCHOOL



Location	Arkansas, USA
Finish(es)	Gray Silver Mica, Teak, Golden Oak
Architect / Specifier	WDD Architects
Installer / Contractor	Ralph Jones Sheet Metal
Size	11,000 sqft

HOTEL INDIGO



Location	Minnesota, USA
Finish(es)	Black
Architect / Specifier	RSP Architects
Installer / Contractor	Division V Sheet Metal Inc.
Size	2,200 sqft

ITAWAMBA COMMUNITY COLLEGE



Location	Mississippi, USA
Finish(es)	Anodic Clear Mica
Architect / Specifier	Pryor Morrow Architects
Fabricator	E Cornell Malone Coporation
Size	15,000 sqft

PARTNERS ANIMAL HOSPITAL WEST LOOP



Location	Chicago, IL
Finish(es)	FR ACM Gray Silver Mica and Anodic Clear Mica
Architect / Specifier	Linden Group Architects
Fabricator	NSS Exteriors
Size	80,00 sqft

JIM BUTLER KIA



Location	Chesterfield, MO
Finish(es)	FR ACM Midnight Black and Bright Silver Metallic
Architect / Specifier	Michael E Bower Architecture
Installer / Contractor	Architectural Sheet Metal, Inc
Size	5,000sqft and 3,500sqft

THE POST



Location	Wisconsin, USA
Finish(es)	Teak, Classic White
Architect / Specifier	Knothe & Bruce Architects, LLC
Installer / Contractor	CMG / Krupp General Contractors
Size	13,000 sqft



Location	Iowa, USA
Finish(es)	Dove Gray, Black
Architect / Specifier	Aspect Architecture
Installer / Contractor	CR Glass / Metal Design Systems, Inc.
Size	14,000 sqft

HUNTINGTON UNIVERSITY MERILLAT



Location	Indiana, USA
Finish(es)	Pewter Mica and Huntington Pine Green (custom)
Architect / Specifier	Design Collaborative
Installer / Contractor	SPS Corporation
Size	-

HUMBER RIVER LTC



Location	Ontario, Canada
Finish(es)	Bone White, Dark Gray, Sea Wolf
Architect / Specifier	Montgomery Sisam Architects
Installer / Contractor	Triumph Aluminum & Sheet Metal inc
Size	-

PARKWOD



Location	Indiana, USA
Finish(es)	Dark Gray
Architect / Specifier	DKGR Architects
Installer / Contractor	Division 7 Mtls
Size	2,300 sqft

BALLY'S CASINO



Location	Missouri, USA
Finish(es)	Ascot White, Bronze, Copper Penny Mica, Pewter Mica
Architect / Specifier	JCJ Architecture
Installer / Contractor	Flynn Midwest LP
Size	50,000 sqft

UConn STEM Research Center



Location	Connecticut, USA
Finish(es)	Custom LITHIC 332 on natural zinc
Architect / Specifier	Payette Architects
Installer / Contractor	Greenwood Industries Inc.
Size	8,950 sqft

ORLANDO HEALTH JEWITT ORTHOPEDIC HOSPITAL



Location	Orlando, FL
Finish(es)	Custom Alabaster
Architect / Specifier	EYP Architecture & Engineering
Installer / Contractor	NRG Cladding
Size	80,000 sqft

MICHIGAN STADIUM SCOREBOARDS



Location	Ann Arbor, MI
Finish(es)	Custom Michigan Blue and Maize
Architect / Specifier	Smith Group JJR
Installer / Contractor	-
Size	37,000 sqft



Location	Middleton, WI
Finish(es)	FR ACM Teak and Exotic Silver Mica
Architect / Specifier	Knothe & Bruce Architects
Installer / Contractor	-
Size	16,000sqft

TLA'AMIN WELLNESS CENTRE



Location	Tla'amin Nation - British Columbia, Canada
Finish(es)	Bronze (JY-6180)
Architect / Specifier	Urban Arts Architecture Inc.
Installer / Contractor	Converge Construction
Size	11,898.33 sqft

THE SALLY



Location	Chicago, IL
Finish(es)	FR ACM Charcoal
Architect / Specifier	Booth Hansen
Installer / Contractor	-
Size	22,000sqft

TOYOTA OF MANHATTAN



Location	New York, NY
Finish(es)	FR ACM Fashion Gray
Architect / Specifier	SLCE Architects, LLP
Installer / Contractor	DK Metals
Size	-

IZZO FAMILY MEDICAL CENTER



Location	Lansing, MI
Finish(es)	ACM & Flat Sheet - Gray Silver Mica
Architect	Gresham Smith
Contractor	Architectural Metals, Inc
Fabricator & Installer	-

SPARE TIME ENTERTAINMENT



Location	Madison, WI
Finish(es)	ACM & Flat sheet - Bronze
Architect / Specifier	-
Installer / Contractor	Coated Metals Group
Fabricator & Installer	2,000sf

ONE COMMUNITY BANK



Location	Cottage Grove, WI
Finish(es)	Anodic Clear Mica, Bone White
Architect / Specifier	OPN Architects
Installer / Contractor	Coated Metals Group
Size	3,000sf

CONVERGENT SCIENCE HEADQUARTERS



Location	Madison, WI
Finish(es)	Alfred FR - Charcoal
Architect / Specifier	-
Installer / Contractor	Coated Metals Group
Size	5,000sf

WINDROSE HEALTH NETWORK



Location	Franklin, IN
Finish(es)	Alfrex FR & Flat Sheet Bone White, Sea Wolf
Architect / Specifier	DELV Design
Installer / Contractor	Division 7 MtlS
Size	-

FRED 310



Location	Frederickson, WA
Finish(es)	ACM, Flat Sheet Dark Gray
Architect / Specifier	NELSON
Installer / Contractor	Exterior Metals, Inc
Size	-

TOWNER COUNTY MEDICAL CENTER



Location	Cando, ND
Finish(es)	ACM, Flat Sheet Dark Gray
Architect / Specifier	Infusion Architects
Installer / Contractor	MG McGrath
Size	-

NORTH AMERICAN PROJECT REFERENCES

Alfred FR Metal Composite Material

PROJECT NAME	LOCATION	ARCHITECT
I400 Baltimore	Missouri, USA	Burns & McDonnell
I60I Sherman	Illinois, USA	Eckenhoff Saunders
360 Oakville Place Drive	Ontario, Canada	B+H Architects
8 Court Square	New York, USA	Hill West Architects
80I Church	Tennessee, USA	Goettsch Partners
A.O.S. Orthopedic Group	Tennessee, USA	Hayden Architecture
Amazon Cougar - Fulfillment Center	Michigan, USA	Stantec Architects & Engineering
Arhaus Tysons Galleria	Virginia, USA	RDL Architects
Armour and Troost	Missouri, USA	Helix Architecture & Design
Ascension St. Thomas Mid-State Medical Office Building	Tennessee, USA	Catalyst Design Group
ATT Building Façade Renovation	Tennessee, USA	EXP
Axis at Legends Crossing Shopping Center	Texas, USA	Sterling Architects, LLC
Bally's Kansas City Welcome Center	Missouri, USA	JCJ Architecture
Black Hawk Medical Center	Oklahoma, USA	Studio 45 Architects
Boston Scientific Weaver Lake 4	Minnesota, USA	HGA - Hammel Green and Abrahamson
Cambria Hotel	South Carolina, USA	Sand Architects
Canadian Blood Services - Calgary	Alberta, Canada	Norr Architecture
Casadona Place	Alberta, Canada	Gibbs Gage
CBHS Heffernan Field House	Tennessee, USA	Fleming Architects
City of Las Vegas Courthouse	Nevada, USA	PGAL LLC, Las Vegas /LVMC Development, LLC
Clemson University Memorial Stadium Renovations	South Carolina, USA	LS3P
Clifton Court Hall - University of Cincinnati	Ohio, USA	LMN Architects
Coaldale Civic Square	Alberta, Canada	FWBA Architects
Cochrane Station-Cochrane Transit Hub	Alberta, Canada	GEC Architecture
Colorado Convention Center	Colorado, USA	TVS
Colquitt Regional Medical Center	Georgia, USA	Thomas Miller & Partners
Connors	Oklahoma, USA	Oklahoma Roofing and Sheet Metal LLC / AMP
CRG - The Cubes @ River	Georgia, USA	Lamar Johnson Collaborative

NORTH AMERICAN PROJECT REFERENCES

Alfred FR Metal Composite Material

PROJECT NAME	LOCATION	ARCHITECT
CRG Inland Woods Chapel	South Carolina, USA	Lamar Johnson Collaborative
Davenport Condominiums	Oklahoma, USA	Ventaire
Desire Florida Center	Louisiana, USA	Mathes Brierre Architects
Douglas MacArthur Junior High School	Arkansas, USA	Cooper Mixon Architects
Fairbourne Station Office Tower	Utah, USA	EDA Architects
Fenwick Tower / The Vuze	Nova Scotia, Canada	Stantec Architecture
Florida Desire Multi Service Center	Louisiana, USA	Mathes Brierre Architects
Founders Classical Academy	Arkansas, USA	WDD Architects
Gateway Meadowvale	Ontario, Canada	Quadrangle Architects
Glendale Medical Office Building	California, USA	SWA Architects
Glenlake III	North Carolina, USA	Piedmont Land Design, LLP
Gordon Flesch Company	Wisconsin, USA	McMahon Associates Inc
Greenfield 27 - 4101 Bldg	North Carolina, USA	Hagersmith Design
Grove @ Whitestation Change Order	Tennessee, USA	LRK Architects
GSU Convocation Center	Georgia, USA	SLAM Collaborative
Harmony Addition	Texas, USA	Gignac Associates
Hawthorne Condominiums	Texas, USA	Kirksey Architecture
Hillwood HS	Tennessee, USA	Hastings Architecture Associates
Hotel Indigo	Minnesota, USA	RSP Architects
Hudson Alpha	Alabama, USA	Fuqua Partners
Humber River LTC	Ontario, Canada	Montgomery Sisam Architects
Hutchinson Metro Center Tower II and Atrium	New York, USA	Newman Design
Ingham County Justics Facility	Michigan, USA	Kramer Management Group
Itawamba Community College - Vo-Tech	Mississippi, USA	Pryor Morrow Architects
Jackson Heart	Mississippi, USA	Holloman Architecture
Jasper Hosue	Alberta, Canada	architects—Alliance
Jonesboro High School	Arkansas, USA	Cahoon Stelling
Keith Summey Library	South Carolina, USA	McMillan Pazdan Smith Architecture

NORTH AMERICAN PROJECT REFERENCES

Alfred FR Metal Composite Material

PROJECT NAME	LOCATION	ARCHITECT
Kipling Go Bus Station	Ontario, Canada	Strasman Architects
Lafayette Economic Development Authority (LEDA)	Louisiana, USA	Domingue, Szabo & Associates, Inc.
Lexus Dealership	New York, USA	SLCE Architects, LLP
Macon Pond Medical Office Building	North Carolina, USA	HagerSmith Design PA
Magnolia Trace Elementary School	Louisiana, USA	Greenleaf Lawson Architects
Methodist Olive Branch Hospital	Mississippi, USA	Gresham Smith
Moore County NC Courthouse	North Carolina, USA	Moseley Architects
Morrison Yard	South Carolina, USA	ASD SKY
Mountain Tech South	Utah, USA	FFKR Architects
Nashville Airport Parking Garage	Tennessee, USA	Moody Nolan
Neuhoff District	Tennessee, USA	HKS Architects
New Southside Elementary and Junior High School	Louisiana, USA	Alvin Fairburn & Associates
One Sullivan Place	New York, USA	RKTB Architects
OnLogic Global Headquarters	Vermont, Canada	Wiemann Lamphere Architects
Orchard Farms	Missouri, USA	Hoener Associates, Inc
Orem VA Clinic	Utah, USA	GSBS Architects
Orlando Health Jewitt Orthopedic Hospital	Florida, USA	EYP Architecture & Engineering
Overland One B3	Kansas, USA	Burns & McDonnell
Overland Park Arboretum Visitors Center	Kansas, USA	Confluence
Parkwood Canopies	Indiana, USA	DKGR Architecture
Planet Fitness	Wisconsin, USA	RMA Architects
Red Deer Justice Centre (RDJC)	Alberta, Canada	Group 2
Riverfront Landing 2	Pennsylvania, USA	JDavis Architects
RWJ Barnabas Health Athletic Performance Center (APC)	New Jersey, USA	Perkins Eastman
Seacoast Medical Park Two	South Carolina, USA	Design Strategies,LLC
Sequoyah	Oklahoma, USA	Michael McCoy Architecture
Shannon Oncology Center	Texas, USA	O'Connell Robertson
Skyview Ranch K9 School	Alberta, Canada	FWBA Architects

NORTH AMERICAN PROJECT REFERENCES

Alfred FR Metal Composite Material

PROJECT NAME	LOCATION	ARCHITECT
Smith Residence Lot 58- 4th	BC, Canada	Openspace Architecture
SNC Lavalin Office	Ontario, Canada	De Silva Architect
Southern First Bank Headquarters	South Carolina, USA	Craig Gauden & Davis Stubbs Muldrow Herin
Southern Indiana Orthopedics MOB	Indiana, USA	BSA Lifestructure
St. Elizabeth's Shelter	Maryland, USA	Wiencek + Associates
Stateline Auto Ranch Subaru	Idaho, USA	BRS Architects
Summit Medical Lab Building	Tennessee, USA	BarberMcMurry Architects
Summit Park Church	Missouri, USA	Method Group
Syngenta Product Metabolism and Analytic Sciences (PMAS)	North Carolina, USA	Hanbury
Tempo Amenity Building	BC, Canada	Robert Ciccozzi Architecture
The Arc	BC, Canada	Franci Architecture
The Atreaux Apartments	North Carolina, USA	Axiom Architecture
The Bridge	Alberta, Canada	Zeidler Architecture
The Conservatory	BC, Canada	Franci Architecture
The George	Nova Scotia, Canada	Fathom Studio
The Hat @ West Village Towers	Alberta, Canada	NORR Architects Engineers Planners
The Lights at Sheyenne 32	North Dakota, USA	ICON Architectural Group
The Oaks	Manitoba, Canada	ft3 Architects
The Post	Wisconsin, USA	Knothe & Bruce Architects
The Renaissance Center	Tennessee, USA	Anderson Buehler Architects pllc
The Shore at Sierra Point (Buildings A,B,C)	California, USA	DES Architects + Engineers
The Smyth	Connecticut, USA	Lessard Design
The Theodore	Alberta, Canada	IBI Group
The Venue at Kee Town	Iowa, USA	OPN Architects
The Villages EEC	-	Wallman Architects
The Windsor	Alberta, Canada	NORR Architects Engineers Planners
TIMPTE, INC.	Iowa, USA	Aspect Architecture
Toyota of Manhattan	New York, USA	SLCE Architects, LLP

NORTH AMERICAN PROJECT REFERENCES

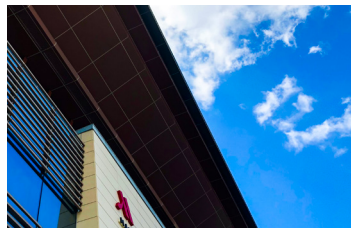
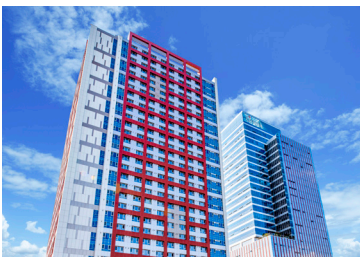
Alfred FR Metal Composite Material

[illegible]

GLOBAL PROJECT REFERENCES

Alfred FR Metal Composite Material

COUNTRY	PROJECT NAME	ARCHITECTURAL FIRM	SIZE (SQFT)
Korea	The Hillstate	KMD Architects & Samoo Architects	753,480
Korea	Doosan We've The Zenith	De Stefano + Partners	317,538
Korea	Sangam Kaiser Palace	HAEAHN Architecture	269,100
Korea	Kolon-Parkpolis	Morphosis Architects	258,336
Korea	Seongnam City Hall	KMD Architects & Samoo Architects	129,168
Korea	OCI Central R&D center	HAEAHN Architecture + H Architecture	129,168
Korea	Dangin Power Plant of TAIHAN	Obra Architects	118,404
Korea	Lions Valley	Mass Studies	107,640
Korea	National Police Agency	H Architecture	96,876
Korea	KEPCO Research Institute	KEPCO Research Institute	75,348
Korea	Korea Land & Housing Corp	DRDS, Moo Young & Tomoon	16,146
Thailand	Honda Big Wing	VaSLab Architecture	53,820
Vietnam	Landmark 81 Tower	Atkins	484,380





Project Name	West Village Towers - The Hat @ West Village
Location	Alberta, Canada
Architect	NORR Architecture & Planning
Owner	Cidex Group of Companies & Wexford Developments LP
Fabricator	Custom Metal Contracting Ltd.
Alfred Product	Alfred FR 4mm Metal Composite Material
Product Finish	Rough 1 (Custom)
	Rough 2 (Custom)
	Concrete White (JY-5140)
	Silver (AL-1220)

The West Village Towers project in downtown Calgary is a rising complex of three interconnected high-rise towers designed to reflect the natural beauty of the nearby Rocky Mountains and Bow River. Also known as “The Hat @ West Village”, when completed, it will be the tallest multi-residential mixed-use project in downtown Calgary – occupying an entire city block and commanding spectacular views of the surroundings.

Each tower features a slanted translucent roofline and multi-colored spandrel panels to exude a combination of shining reflectivity and warm earth tones. The wall cladding design challenge centered around choosing materials that would blend well with the specified clear and blue glazing, project a look and feel reminiscent of the surrounding landscape, and not require highly specialized installation systems.



Custom Metal Contracting Ltd. of Calgary, Alberta Canada and Alfred, Inc. of Buford, Georgia USA partnered to develop a comprehensive solution that would achieve the design intent while providing economic benefits versus other alternatives. A key component of the solution was the development of three rough textured finishes to mimic the look and feel of concrete. After color and texture approval, a specially formulated protective film was employed to adhere to the textured finish surface and provide for maximum protection during the fabrication and installation phases of the project. Utilizing Custom Metal Contracting’s Composite Panels System Series 20 rainscreen system, at project completion approximately 130,350 square feet of Alfred FR 4mm MCM in four colors will clad the exterior of the three towers and integrate beautifully as a new addition to the Calgary skyline.

Alfred, Inc. is the newest North American domestic MCM manufacturer and is pleased to be a member of the Metal Construction Association and MCM Alliance. Alfred specializes in fire-resistant and non-combustible architectural metal wall cladding with a portfolio including Alfred FR Metal Composite Material, matching 0.040” flat sheet, and coil coated aluminum Alfred Plate in 0.080” and 3mm thick panels up to 62” wide. Its parent company, Unience, Co Ltd., began operation in 2000 as a manufacturer of specialty fire-resistant coatings, bonding materials, and pelletized mineral filled FR core compound for globally recognized MCM manufacturers. In 2008, Unience launched Alfred in South Korea with a multi-line MCM production facility dedicated to the exclusive production of FR core MCM utilizing in-house, fire-resistant core technology. Today, both Unience and Alfred are headquartered in Buford, Georgia USA, with a new state of the art FR core MCM production plant complimented by a commercial branch in Toronto, Ontario Canada.



Alfrex, Inc.
943 Gainesville Hwy Bldg. 100, Suite 4000
Buford, GA, 30518
470.589.7449
alfrex@alfrexusa.com
www.alfrexusa.com

alfrex
Fire Resistant & Non-Combustible Cladding